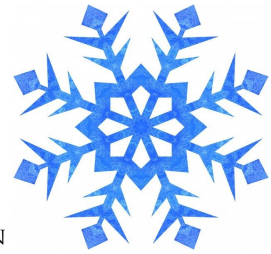




United
Methodist
Women

FAITH • HOPE • LOVE IN ACTION



St Marks UMW Update-January 2020

“St Mark’s United Methodist Women”
monthly gatherings take place September through May. They are held the second Tuesday each month.

Morning meetings: 9-11 am. Evening meetings: 7-9 pm. Childcare is provided! To register for childcare, please click on the link below:

<https://m.signupgenius.com/#!/showSignUp/10c094ba9a722a13-childcare>

All are invited to join us for fun and fellowship!

The President’s Corner

2020! A new year! A new decade! A new beginning! New possibilities! No matter how you look at it, it brings an air of excitement. It’s also a time for reflection: the things you’ve done, the ups and downs of the previous year, God’s blessing in your life.

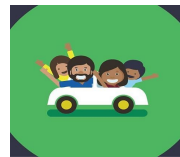
The United Methodist women have had many, many “ups” this year. The United Methodist Women Kick-off in September brought new guests and some new members. Also in September was the celebration of the creation of United Methodist Women’s 150 year anniversary of their first meeting. How exciting to learn about those brave women and our history! November was very busy. The Arts and Crafts Marketplace introduced some new vendors, new volunteer

opportunities and lots of crafty ideas. The Heart Warming Retreat filled our hearts and soul with God’s love. We ended the year with the Christmas Celebration with guest speaker, Shannon Priddy and lots of fun and fellowship.

Looking ahead, the upcoming events are the Bake Sale, the Mother Daughter Friend Banquet and Trinkets & Treasures. A lot to look forward to!!

So take a moment, reflect on your ups and downs, and reflect on all God’s blessings in your life. And Happy New Year!

Steff UMW President
steffmabe@yahoo.com



Rides to Meetings

We have members who have signed up in our survey to provide rides, and we would be happy to coordinate this with those who need rides.

Please let me know if you need a ride to the day meetings contact Ann Baker 812-480-6864. For evening meetings, Sonjia Clodfelder 765-744-6035, clod1725js@aol.com

2020 Pledge Forms.

With the combination of our UMW pledges and project profits we were able to reach out to many community and also some state, national and international programs. If you have not yet completed your pledge for 2020 UMW calendar year, you may still do so at the January meeting, or email me with your pledge amount. Please help us continue to meet our UMW mission.

Thank you.

Sarah Lasbury

sblasbury@comcast.net

Checks should be made payable to St Mark's UMW. For questions, please contact Sarah Lasbury at sblasbury@comcast.net or 219+-718-5957. We are thankful for the enthusiastic, involved members of St. Mark's United Methodist Women.

2020
UNITED METHODIST WOMEN
READING PROGRAM



UMW Reading Program “Your Windows to the World” St Marks Church Library

Every year the United Methodist Women's National Office recommends a diverse range of books with the intention of broadening exposure to a variety of concepts. This program organizes books into five categories. Our UMW Reading Program group selects a book from each of the categories and meets five times a year for fellowship and book discussion.

The five categories:

Education for Mission

Leadership Development

Nurturing for Community

Social Action

Spiritual Growth

The first meeting of 2020 for the UMW Reading group will be **Monday, Feb. 24** at 7:00-8:30 PM in the LIBRARY! The beautiful new library. Sally Hubbard has given us one entire side of the rolling book shelf and we will be reading books from the purple Education for Missions category. A letter with new books will be sent for your information.

And don't forget the Response magazines on the bottom shelf for some inspiring reading on these cold winter nights.

Questions? call Susan Salter, 317-848-1194 or [email sbf5salter@att.net](mailto:sbf5salter@att.net)

Update Articles

Please submit all articles for the “Update” to Peggy-Anne Hoy at pahat664@gmail.com

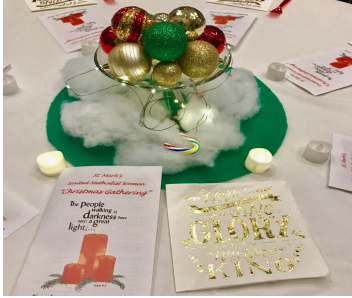
Distribution List Changes

Please submit any changes to Laura McCloughan at laura.mccloughan@gmail.com

Social Action and UMW

The Social Action committee met on Monday Jan 6th. In 2020, the emphasis will be on “Welcoming the Stranger”. That will include welcoming people from other religions, other countries and other socioeconomic backgrounds.

More details to come.



“A Joyful Christmas Celebration”

The United Methodist Women’s Christmas Gathering was an evening filled with delicious food, laughter, joyful singing, and inspiration. We were blessed to have the National President of UMW, Shannon Priddy, as our guest speaker. She challenged us to continue to tell our story, to share our legacy, and to be faithful and strong in our service to women, children and youth not only locally but globally. Special Mission Recognition Awards were presented to Lydia Fourman, Kathi Hall and Janet and Doug Brown for their leadership, service and outreach.

From the closing prayer led by Pastor Mary Ann.

“When the song of the angels is stilled, when the star in the sky is gone, when the kings and princes are home, when the shepherds are back with their flocks, the work of Christmas begins: to find the lost, to heal the broken, to release the prisoner, to rebuild the nations, to bring peace among the people, to make music in the heart. Amen.”



Trisha Staneart with Shannon Priddy

Special Mission Recognition

Missions is indeed a way of life at St. Mark’s. If you become a member of the UMW Special Mission Recognition Committee next year you become very heartened to learn all that is going on in the volunteer lives of our members.

Their reach is not limited to the endeavors that are connected to St. Mark’s but extends to service in many other organizations throughout the community, the country and the world.

Doug and Janet Brown



This couple has been so involved in missions for St. Mark's that it came as a surprise to members of our committee that they had not previously been given A Special Mission Recognition. From the time they moved to Carmel from Midland, Michigan, they have involved in many missions. From Midland, they, together with the Miller family, introduced St. Marks to Holy Walk to Bethlehem and created an outreach to Carmel and the greater southern Hamilton County. Doug and Janet have been served on work groups to Red Bird Mission, Mission Guatemala and Habitat for Humanity. Doug continues to tutor at an after school program for the Brightwood Community Center and Janet has become a volunteer with the Mustard Seed in Fishers which provides basic household furnishings to those in need. Both have continued to be volunteers with Interfaith Hospitality Network, Soups On at Roberts Park and Gleaners.

Kathi Hall



Kathi is a member of UMW who was asked to serve on the board the year she joined our church. Kathi really didn't know what was expected of her in this job but, after learning the hard way, she plunged right in and did a wonderful job and has been a member of the board since. This readiness to serve with a willing heart and a ready smile has served UMW well. Here is a listing of only some of those areas.

Kathi has an on-going relationship with the Lebanon UMC Children's Home and led a field trip to learn more about it.

Kathi was the popular Quick Cuisine interest group leader for several years.

Kathi has been co-chef at our Candy Cane Café for the last 4 years.

Kathi started volunteering for the Brightwood Meal Program in May, 2012, and in January, 2016, she started coordination the meal program and has continued to do so.

Lydia Fourman



This enthusiastic lady always greets you with a warm smile and gives you all her attention. She and her husband joined the church in 2003 and she has been an involved member since the day she joined. Her natural leadership ability has her handprint

in many of the mission programs at the church.

She has been involved in at least five UMW Retreats over the years. Her great sense of humor, special gifts of singing and silly games have added much laughter and fun to the retreat participants.

Redbird???

She jumps in wherever needed and is always willing to do the “dirty” work that no one else wants to do:

Rain or shine she and husband volunteer to trim bushes and clean up the church grounds, help clean up in the kitchen when no one signs up to help.

She was on St. Mark’s staff from 2006 – 2019. Starting the Reel Spirituality class and watching over both adult Sunday School and Bible classes. Always reading and researching on how to make the classes better.

Since she retired she will continue to lead Bible Study groups and has recently organized the Funeral Meals Group. Always thinking outside the box, she has simplified all of the steps in preparing meaningful church funeral meals thereby making the jobs of both volunteers and church staff more efficient.

January Mission:

We are collecting oatmeal to help restock the shelves of Fletcher Place Community Center. Feel free to drop off a container in one of the RED TOTES.

JANUARY 2020 WORDS OF ENCOURAGEMENT FOR ASCENT 121 STAFF

Teens that survive sex trafficking have endured extraordinary trauma. Working with those clients all day every day is very stressful to the Ascent 121 staff and frequently results in secondary trauma (stress, inability to sleep, challenges in maintaining relationships, overly emotional, depression, anxiety, etc.). As a faith based agency, scripture and words of encouragement are sincerely appreciated by the staff. At our January morning and evening meetings, UMW members will have a chance to write notes of encouragement to the staff who work with the teen survivors at Ascent 121. Note cards will be provided at both meetings and can be found at the sign-in table.

Reminder: We will hold our meeting in the sanctuary this month. Hopefully the construction will be done by next month and we can resume our meetings in the Chapel.

Morning Groups

BOOKWORMS

A book discussion group that reads both fiction and nonfiction. The books may or may not be related to Christianity, but we will often ask if the material points us toward redemption, reconciliation and grace.

January 2020- Sea of Memories Fiona Valpy

February 2020- Some Luck Jane Smiley

March 2020- A Piece of the World Christina Baker Kline

April 2020- The Boys in the Boat Daniel James

Facilitator: Gail Lee

SPIRITUAL GROWTH

In Practicing Resurrection, author Janet Wolf explores what it means to live a life of radical discipleship today using the Gospel of Mark as the foundation. The stories of the women in Mark are a particular focus in this study. Wolf's book (\$10) is available from

Facilitator: Mary Ann Moman

MAKE IT AND TAKE IT

This group is a little crafty, a little messy, and a lot of fun. No special craft skills are needed, and we supply the craft materials for a small fee. Come join the fun!

The project for January is a Vanilla-lavender Sugar Scrub. It smells great and will be a help with winter dry skin. Very simple but fun to make. Cost will be \$3.00. Join us in room GH after the general meeting.

Facilitators: Kathy Dycus and Marilyn Roberts

Color and Chat

Coloring isn't just for kids! Come enjoy fellowship while coloring with UMW friends. This group will color and discuss pages with inspirational quotes and scriptures.

Facilitators: Deirdre Robinson and Cathy Brinkman

Evening Groups

BOOKMARKERS

The evening Bookmarkers read anything and everything, and enjoy lively discussion, fellowship and support. For **January**, we will be reading: **The Girl with Seven**

Names by Hyeonsceo Lee and David John
FEBRUARY - That's How It Always Is by Laurie Frankel

MARCH - A Mighty Long Way by Carlotta Walls Lanier

APRIL - Sensible Shoes by Sharon Garlough Brown

MAY - Long Way Down by Jason Reynolds

SUMMER - The Crazy Ladies of Pearl Street by Trevanian

Facilitator: Debbie Skinner
dskins25@hotmail.com or call
317-574-1997 with any questions.

SPIRITUAL REFLECTIONS

Spiritual Reflections will use an Adam Hamilton study called *The Call: The Life and Message of The Apostle Paul*. We will use this study to guide our thoughts on how this might apply to our current life. No preparation required. We watch a video and discuss its content. You can study the lesson in advance if you want or not.

Facilitator: Holly Moore

(If there is an interest group you would like to see offered or you would enjoy facilitating,

Contact Mary Etta Yoho at 765/215-7773 or
maryetta.yoho@gmail.com

**The Outreach theme for January-
"Warming up with Kindness"**

Take a moment to introduce yourself to someone new. Smile at a stranger. Send a note to someone who needs a little pick me up. These small acts have a bigger impact than we can realize.



United Methodist Women would like to wish a very happy birthday to all those who are celebrating

Barb Threlkeld	1/15
Lucy Sheehan	1/18
Becky Short & Karen Stelzer	1/19
Kate King	1/22
Emily Stahl	1/25
Nancy Story	1/26
Jennifer Cloud-Buckner & Jane Van Dyne	1/27
Marilyn Bisbecos & Kathleen Wetzel	1/30
Camille Gaughan, Beth Montag & Marilyn Myers	1/31
Julie Gren, Jennifer Howell, Lori Roberts & Victoria Snyder	2/1
Barbie Schmenner	2/2
Becky Beckman & Joanne Herman	2/4
Anna Flohr & Joan Holtzberg	2/5
Pam Bollier	2/7
Jackie Rowell	2/8

Ada Hoffmaster	2/9
Julia Gonzales	2/12
Jennifer Fogo, Holly Moore,	
Amy Pritchard & Jane Roberts	2/13
Jenny Wilkins	2/14
Deb Ranek & Connie Tingley	2/15

Let us know if we have left anyone out.

To receive reminders about UMW activities, please send a note & your email address to

umw@stmarkscarmel.org.

We look forward to hearing from you.

With faith, hope & love,
Membership, Nurture and Outreach Chairs
Ann Baker, Linda Mitchell-Powell and
Sonjia Clodfelder

Reminder- The Mission Messenger which is the Indiana UMW newsletter is available via link on the St Mark's UMW website. <http://www.stmarkscarmel.org/umw>

UPCOMING EVENTS

Brightwood Meal

Thanks to everyone who helped with the last Brightwood meal. We served 16 children and 5 adults. As always, the meal was well received. The next 2 meals that UMW will provide will be on Thursday, Jan 23 and Feb 20th. We will leave church at 3:00 and should return around 6. Be watching for the sign-up genius to come out about a week before. Thanks for all your help with this important mission. For questions contact: Kathi Hall
khall7401@sbcglobal.net.



DESSERT EXTRAVAGANZA!

Bake it, Make it, Bring it in!

Desserts and sweet treats of all types are needed for our winter fundraiser, Dessert Extravaganza, on February 9th. Cookies, cakes, candy, cupcakes, pie; whatever your specialty, we will sell it! We also encourage you to package your treat donations, keeping in mind a “Sweets for Your Sweetheart” theme. Thank you!

Drop off: You can drop your donations on Saturday, February 8th, 10-12 am, or Friday, February 7th, in the Narthex kitchen during church hours, 9-12 am.

For questions, please contact Sandy Melin at sandymelin01@gmail.com

2020 Calendar - St. Mark's United Methodist Women

1/14/20	9am & 7pm	Morning & Evening Meeting/Interest Groups – St. Mark's UMC
1/24 -1/25/20	7pm to 3 pm	*Spiritual Retreat - McCormick's Creek State Park (info on back)
2/4/20	7pm	Board Meeting
2/9/20	Sun.	Bake Sale Extravaganza – St. Mark's UMC
2/11/20	9am & 7pm	Morning & Evening Meeting/Interest Groups – St. Mark's UMC
3/3/20	7pm	Board Meeting
3/10/20	9am & 7pm	Morning & Evening Meeting/Interest Groups – St. Mark's UMC
4/7/20	7pm	Board Meeting
4/14/20	9am & 7pm	Morning & Evening Meeting/Interest Groups – St. Mark's UMC
5/5/20	7pm	Board Meeting
5/12/20	6:30pm	Mother/Daughter/Friend Banquet – St. Mark's/Wesley Hall
5/22-5/23	Fri.-Sat.	Trinkets & Treasures Rummage Sale - St. Mark's/ Wesley
5/23/20	Sat.	Collect and Connect- Goodwill Clothing Drive – St. Mark's

*Indicates off-site events, Update & other newsletters available via link: stmarkscarmel.org/umw
Questions: umw@stmarkscarmel.org

The UMW and Church Woman United Legislative and Advocacy Day will be **March 5, 2020** at North United Methodist Church. The theme will be maternal and child health.

2019 -2020 St Mark's UMW Board

President	Steph Mabe
Vice President of Interest Groups & Programming	Mary Etta Yoho
Vice President of Fund Raising	Peggy Nicolai
Recording Secretary	Trisha Staneart
Corresponding Secretary	Beth Montag
Treasurer	Sarah Lasbury
Assistant Treasurer	Ada Hoffmeister
Mission Coordinator/Spiritual Growth (AM)	Kathy Deakyne
Mission Coordinator/Spiritual Growth (PM)	Miriam Taylor
Mission Coordinator/Education & Interpretation	Linda Shenk
Mission Coordinator/Membership Nurture & Outreach AM	Ann Baker
	Linda Mitchell-Powell
Mission Coordinator/Membership Nurture & Outreach PM	Sonjia Clodfleder
Mission Coordinator/Social Action	Kate King
Secretary of Program Resources/Nat'l Reading Program	Susan Salter
Publicity & Public Relations Chair	Joann Burnett
Nominations Committee Chair	Marilyn Roberts
Historian	Kathy Lentz / Barbie Schmenner
Newsletter Editor	Peggy-Anne Hoy
Hospitality Coordinator AM	Cathy Wilkinson
	Janice Presley
Hospitality Coordinator PM	Kathleen and Kit Zelner
Bulletin Board Coordinator	Kathleen Zelner
Pianist AM	Pam Whitehead
Pianist PM	Pat Parks
Songleader, AM	Lydia Fourman
Webmaster	Laura McCloughan
Members at Large	Kathi Hall
	Kathy Dycus
	Holly Moore

Prayer Calendar

Some of us may remember the children's Sunday school song "Jesus Wants me for a Sunbeam." The simple verse reminds us of two basic Christian affirmations: First, that God is light, the source of all truth, goodness and love: and secondly, that followers of Jesus are expected to convey and be the light of God in the world. The identification of God with light is a frequent biblical theme from Genesis 1 – when God commanded "Let there be light"- to Revelation 22-God as illuminator in the new creation. Jesus refers to himself as "the light of the world" in John 8:12, and t disciples as such in Matthew 5:15, the passage in which the life of faith is likened to a candle shining in the darkness.

The 2020 Prayer Calendar explores light as a theological and personal reality – the experience of God’s light shining on and through us. It uses words and images to bear witness to God’s light and to dramatize the various ways in which holy light brightens our individual and corporate dark places. The prayers here help us to shine a light on situations and sorrows in our world that need hope and healing, challenging us to expose abuse and evil that leave many people in shadows of despair and fear.

MISSION FOCUS

BIRTHDAYS

JAN 12 Atlantic Street Center, Seattle, Washington.	JAN 12 Fawn McCallister (DHMR), Paul Lee Webster(M), Cornelia Wieck(M)
JAN 13 Kenya. Center for Victims of Torture. Providing mental health counseling and physiotherapy services to refugee survivors of torture, war trauma and other extreme human rights abuses, who are living in poor communities in Nairobi.	JAN 13 Lisa Bachman(DHMR)
JAN 14 Columbia. Centro Popular para America Latina de Comunicacion. Training of indigenous and Afro-Latina young women in the knowledge and promotion of their right and social values to create justice and peace in society.	JAN 14 Tendai Paul Manyeza(GH)
JAN 15 Rwanda. Rwanda Conference and District Transportation Initiative. Providing support, motorcycles, bicycles and an automobile for missional travel.	JAN 15 Sumesh Kumar(S)
JAN 16 Tanzania. Angel House Orphanage and School. Caring for orphaned/abandoned children, to educate a faithful, self-sufficient generation.	JAN 16 Innocent Afful(M)
JAN 17 Senegal. Anti-Poverty Initiative(API), Helping Impoverished women become micro-entrepreneurs.	JAN 17 Logan Alley(DHMR), Florida Gailles(S), Asti White(GMF US-2)
JAN 18 Bennett College for Women, Greensboro, North Carolina.	JAN 18 Maria Hase(DHMR), Margaret Jane Kies(M)

Field of Work Categories: CCW = Church and Community Workers, DHMR = Order of Deaconess and Home Missioner, GH = Global Health, GMF Intl = Global Mission Fellows International, GMF US-2 = Global Mission Fellows US-2, HM = Home Missionaries, M = Missionaries, REPM = Racial Ethnic Plan Missionaries, RM = Regional Missionaries, S = Staff.

UNITED METHODIST WOMEN

2018 Conference Giving Report

Numbers reflect the total giving
of United Methodist Women members
for the fiscal year ended December 31, 2018

Submitted by **Leslie Nedderman**, director of financial systems
for the national policymaking body of United Methodist Women.

Jurisdiction	2018 Pledge	Mission Giving	Designated Giving	The Legacy Fund	TOTAL
NORTH CENTRAL JURISDICTION	\$ —	\$ —	\$ —	\$ 20,000.00	\$ 20,000.00
Dakotas	140,000.00	143,236.70	11,921.00	11,926.87	167,084.57
Detroit	190,000.00	201,232.69	26,831.19	17,101.09	245,164.97
East Ohio	215,000.00	193,085.78	13,973.77	6,066.89	213,126.44
Illinois Great Rivers.....	340,000.00	333,341.91	118,459.69	12,635.28	464,436.88
Indiana.....	310,000.00	281,479.75	25,449.22	30,425.14	337,354.11
Iowa	475,000.00	470,059.23	96,492.21	23,459.93	590,011.37
Minnesota	170,000.00	194,652.14	61,079.81	22,180.29	277,912.24
Northern Illinois	290,000.00	277,884.62	21,115.53	14,096.54	313,096.69
West Michigan	137,128.70	164,336.16	18,843.98	9,918.13	193,098.27
West Ohio.....	350,000.00	277,055.18	36,338.57	16,135.14	329,528.89
Wisconsin	200,000.00	209,122.89	17,723.10	16,411.63	243,257.62
TOTAL NORTH CENTRAL.....	\$2,817,128.70	\$2,745,487.05	\$448,228.07	\$200,356.93	\$3,394,072.05
NORTHEASTERN JURISDICTION	\$ —	\$ —	\$ —	\$ —	\$ —
Baltimore-Washington	195,000.00	163,870.72	19,288.55	10,944.30	194,103.57
Eastern Pennsylvania	160,000.00	131,074.60	6,901.07	16,899.59	154,875.26
Greater New Jersey.....	160,000.00	117,278.88	18,017.31	9,101.20	144,397.39
New England	75,000.00	65,384.67	6,190.91	101,400.19	172,975.77
New York.....	130,000.00	126,584.95	8,466.00	31,221.16	166,272.11
Peninsula-Delaware	38,500.00	53,979.66	8,237.25	4,312.57	66,529.48
Susquehanna	155,000.00	156,918.66	24,509.01	6,543.81	187,971.48
Upper New York.....	175,000.00	133,262.83	10,053.30	8,776.69	152,092.82
West Virginia	132,000.00	143,634.87	16,495.08	18,541.76	178,671.71
Western Pennsylvania.....	160,000.00	177,310.33	13,078.62	12,968.76	203,357.71
TOTAL NORTHEASTERN.....	\$1,380,500.00	\$1,269,300.17	\$131,237.10	\$220,710.03	\$1,621,247.30

Jurisdiction	2018 Pledge	Mission Giving	Designated Giving	The Legacy Fund	TOTAL
SOUTH CENTRAL JURISDICTION	\$ —	\$ —	\$ —	\$ 31,083.22	\$ 31,083.22
Arkansas.....	215,000.00	185,095.80	38,036.90	7,624.20	230,756.90
Central Texas.....	160,000.00	93,788.81	6,830.87	8,473.76	109,093.44
Great Plains.....	625,000.00	658,549.45	93,168.49	27,304.22	779,022.16
Louisiana.....	145,000.00	97,384.83	11,305.50	9,380.70	118,071.03
Missouri.....	209,095.00	269,882.84	21,633.62	14,270.02	305,786.48
New Mexico.....	80,000.00	53,320.06	5,014.27	7,609.96	65,944.29
North Texas.....	140,400.00	141,476.29	29,858.99	10,230.23	181,565.51
Northwest Texas.....	52,000.00	49,565.34	7,122.50	2,840.90	59,528.74
Oklahoma.....	290,000.00	208,912.40	10,080.06	17,681.87	236,674.33
Oklahoma Indian Missionary.....	7,985.00	11,409.97	1,295.00	1,100.49	13,805.46
Rio Texas.....	160,000.00	168,999.17	11,952.71	16,398.62	197,350.50
Texas.....	156,560.00	173,128.27	19,206.48	10,943.26	203,278.01
TOTAL SOUTH CENTRAL.....	\$ 2,241,040.00	\$ 2,111,513.23	\$ 255,505.39	\$ 164,941.45	\$ 2,531,960.07
SOUTHEASTERN JURISDICTION	\$ —	\$ —	\$ —	\$ 790.00	\$ 790.00
Alabama-West Florida.....	121,450.00	111,154.47	15,849.36	17,490.50	144,494.33
Florida.....	410,000.00	350,602.86	23,054.75	63,476.86	437,134.27
Holston.....	275,000.00	242,247.36	44,510.42	14,270.21	301,027.99
Kentucky.....	84,806.00	104,203.67	6,859.72	10,779.90	121,843.29
Memphis.....	170,000.00	131,116.64	9,496.60	3,252.35	143,865.59
Mississippi.....	170,000.00	86,058.66	19,390.36	3,135.35	108,584.37
North Alabama.....	150,000.00	99,592.01	8,388.32	6,404.17	114,384.50
North Carolina.....	325,000.00	326,253.94	16,334.06	10,082.70	352,670.70
North Georgia.....	300,000.00	250,453.66	59,043.69	21,174.63	330,671.98
Red Bird Missionary.....	897.00	904.00	247.00	328.69	1,479.69
South Carolina.....	289,800.00	250,982.98	99,915.95	8,288.95	359,187.88
South Georgia.....	150,000.00	166,826.79	54,820.62	7,951.03	229,598.44
Tennessee.....	110,000.00	110,000.00	14,200.10	9,352.18	133,552.28
Virginia.....	685,000.00	551,083.49	69,067.13	31,200.43	651,351.05
Western North Carolina.....	700,000.00	591,271.30	66,172.00	74,986.59	732,429.89
TOTAL SOUTHEASTERN.....	\$ 3,941,953.00	\$ 3,372,751.83	\$ 507,350.08	\$282,964.54	\$ 4,163,066.25
WESTERN JURISDICTION	\$ —	\$ —	\$ —	\$ 20,000.00	\$ 20,000.00
Alaska.....	22,000.00	11,709.55	426.96	10,579.15	22,715.66
California-Nevada.....	114,000.00	117,630.61	34,806.58	17,409.64	169,846.83
California-Pacific.....	270,000.00	335,757.31	35,030.08	51,794.31	422,581.70
Desert Southwest.....	68,070.94	83,323.93	6,778.19	26,082.48	116,184.60
Oregon-Idaho.....	115,000.00	117,976.85	7,764.55	12,263.05	138,004.45
Pacific Northwest.....	100,186.90	116,709.38	13,779.81	10,613.21	141,102.40
Rocky Mountain.....	166,000.00	168,736.47	31,182.49	28,274.82	228,193.78
Yellowstone.....	54,200.00	49,890.98	2,607.51	5,998.47	58,496.96
TOTAL WESTERN.....	\$ 909,457.84	\$ 1,001,735.08	\$ 132,376.17	\$ 183,015.13	\$ 1,317,126.38
Miscellaneous Donations.....	\$ —	\$ 126,245.00	\$ 33,694.00	\$ 19,812.03	\$ 179,571.03
GRAND TOTALS.....	\$11,290,079.54	\$10,627,032.16	\$ 1,508,390.81	\$ 1,071,800.11	\$13,207,223.08

